



**Bath & West
Community Energy**
Generating local energy



Report on BWCE Activities

Pete Capener, MD
Bath & West Community Energy



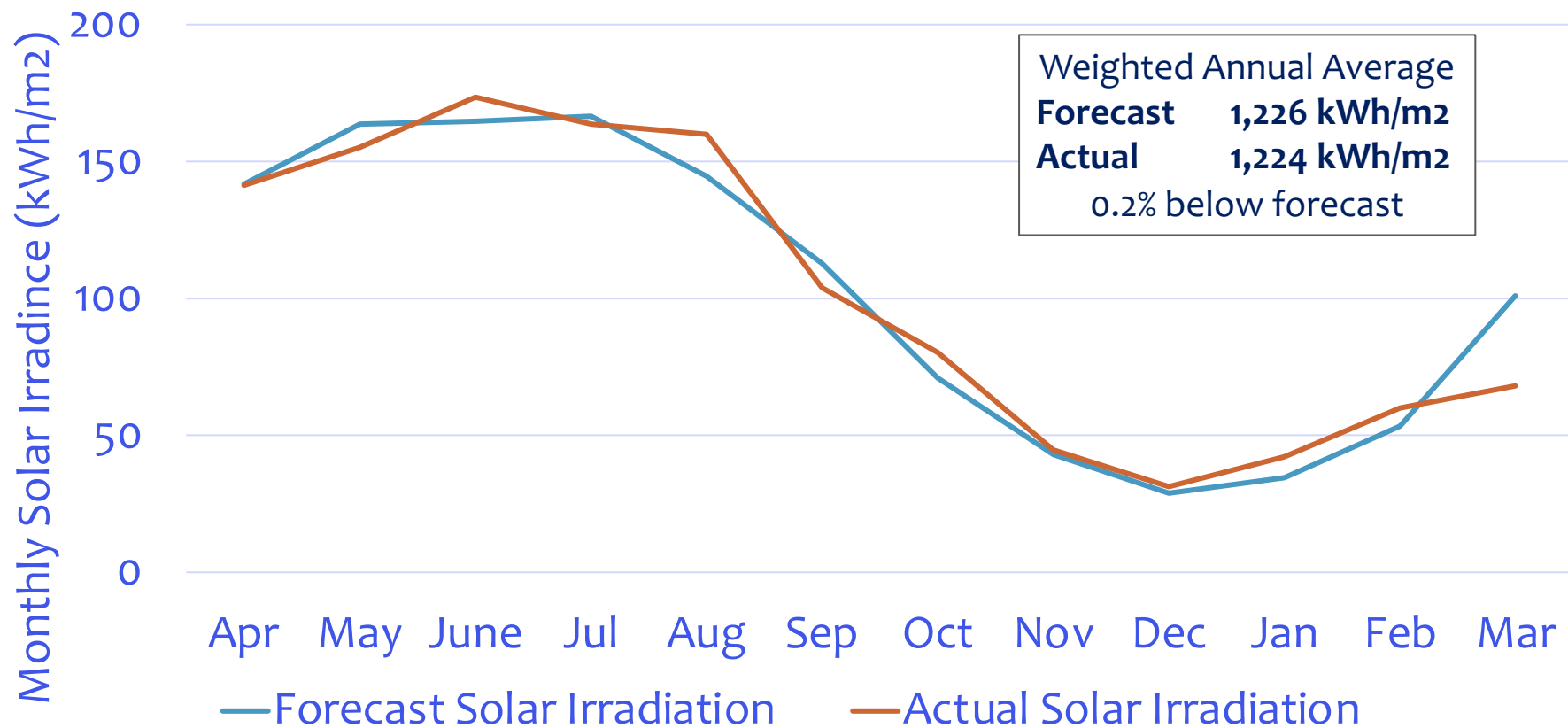
Outline

1. Project Performance
2. New Project Development
3. Highlights
4. Organisational Development
5. Building Community Support

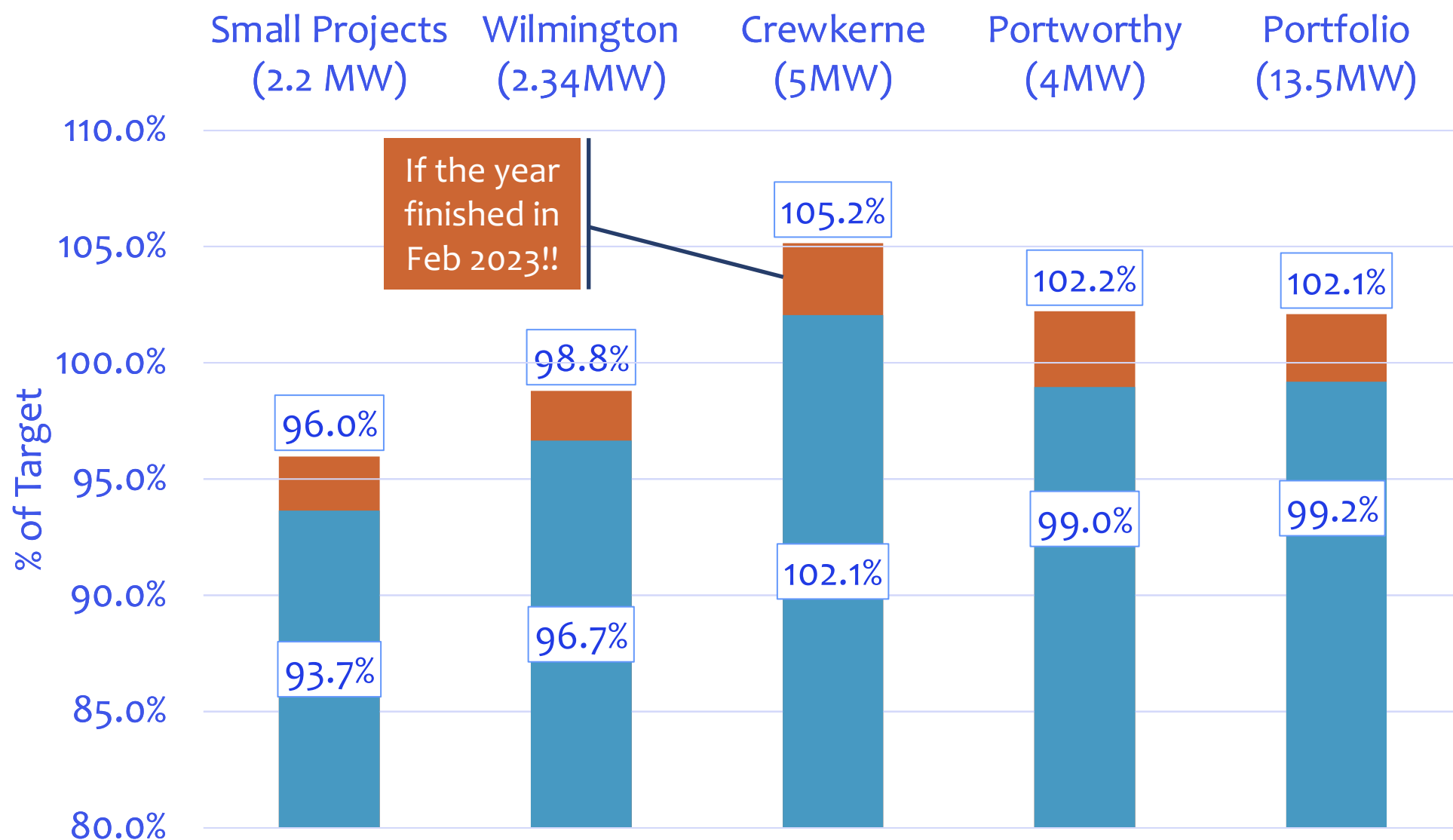


Solar Irradiance - 2022-23

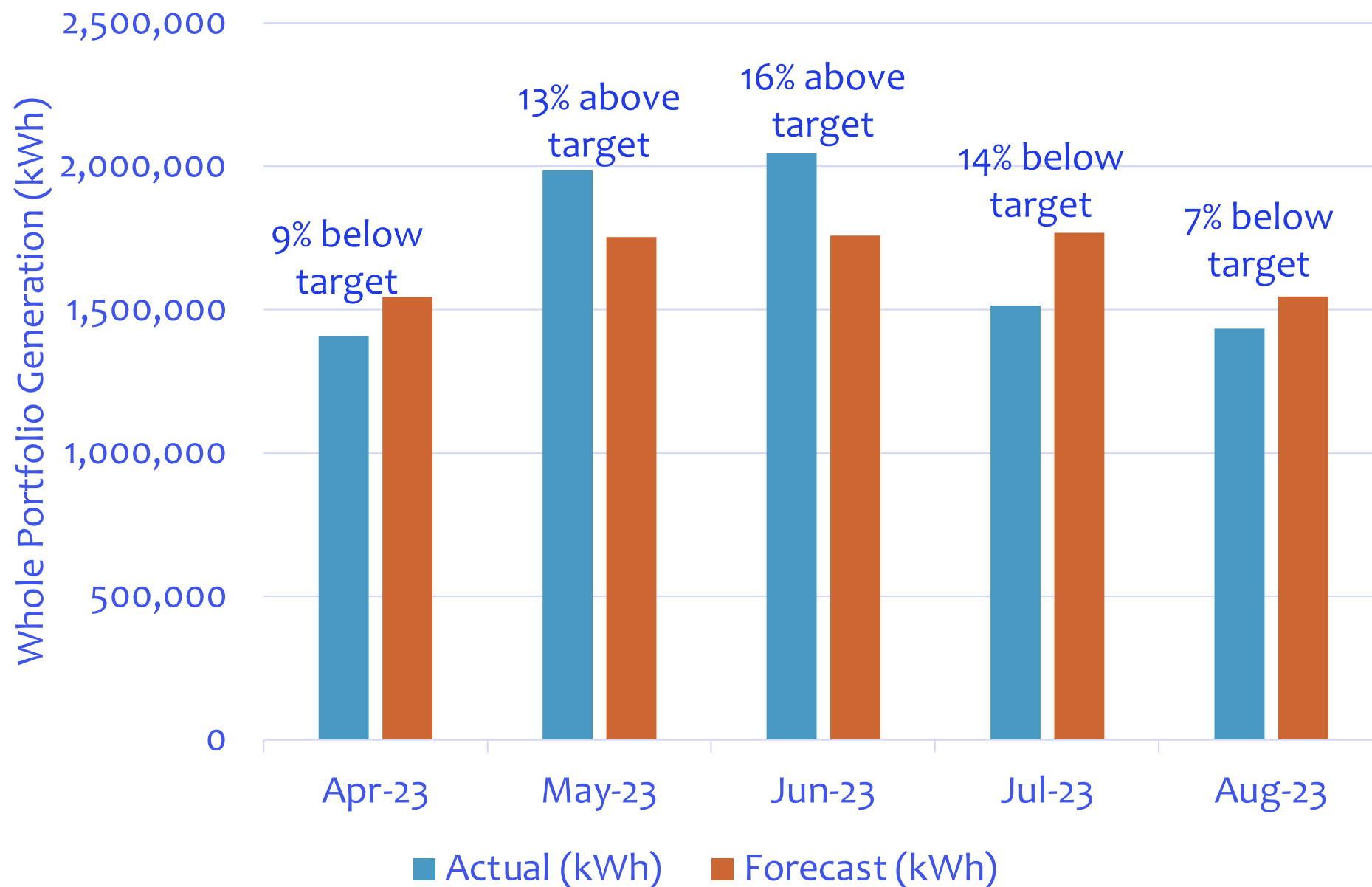
Weighted Average Solar Irradiance Across Three
Largest Ground Mount Solar Sites (84% of Portfolio)



Generating Performance 2022-2023 – 0.8% Below Target



Performance 2023-24 – 0.2% Above Target To Date



Our Project Pipeline

	KW	Capital Cost
Built out before March 2023 – rooftop solar		
Lansdown Golf Club	41	£39,565
Ralph Allen School (3 rd array)	25	£22,750
Writhlington School	170	£155,449
Hayesfield School	91	£96,164
Somervale School	114	£112,344
Beechen Cliff School	262	£214,821
Norton Hill School	160	£146,803
Three Ways School	129	£100,699
Corsham School (2 nd array)	33	£30,853
Total	1,023	£919,448



Our Project Pipeline

	KW	Capital Cost
Built out before March 2023 – rooftop solar		
Lansdown Golf Club	41	£39,565
Ralph Allen School (3 rd array)	25	£22,750
Writhlington School	170	£155,449
Hayesfield School	91	£96,164
Somervale School	114	£112,344
Beechen Cliff School	262	£214,821
Norton Hill School	160	£146,803
Three Ways School	129	£100,699
Corsham School (2 nd array)	33	£30,853
Total	1,023	£919,448

	KW	Capital Cost
Built out in 2023-24 to date – continued		
St Johns Primary School	41	£40,707
St Mary's Primary School	24	£29,665
Sheldon School	214	£208,076
Dragonfly Leisure	189	£152,471
Total	608	£565,509



Our Project Pipeline

KW Capital Cost			KW Capital Cost		
Built out before March 2023 – rooftop solar			Built out in 2023-24 to date – continued		
Lansdown Golf Club	41	£39,565	St Johns Primary School	41	£40,707
Ralph Allen School (3 rd array)	25	£22,750	St Mary's Primary School	24	£29,665
Writhlington School	170	£155,449	Sheldon School	214	£208,076
Hayesfield School	91	£96,164	Dragonfly Leisure	189	£152,471
Somervale School	114	£112,344	Total	608	£565,509
Beechen Cliff School	262	£214,821	KW Capital Cost		
Norton Hill School	160	£146,803	Scheduled to be built out over next 12-18 months		
Three Ways School	129	£100,699	Sir Bernard Lovell Academy	298	£250,932
Corsham School (2 nd array)	33	£30,853	Other Futura Trust Schools	240	£233,794
Total	1,023	£919,448	4 other schools and HE sites	991	£856,416
KW Capital Cost			Fairy Hill field solar array	1,500	£1,278,683
Built out in 2023-24 to date – rooftop solar			Forest Gate field solar array	10,000	£8,106,200
St Augustine's College	70	£60,352	Total	13,029	£10,726,025
St Marks Secondary School	70	£74,238	Total – Still to be built	13,637	£11,291,534

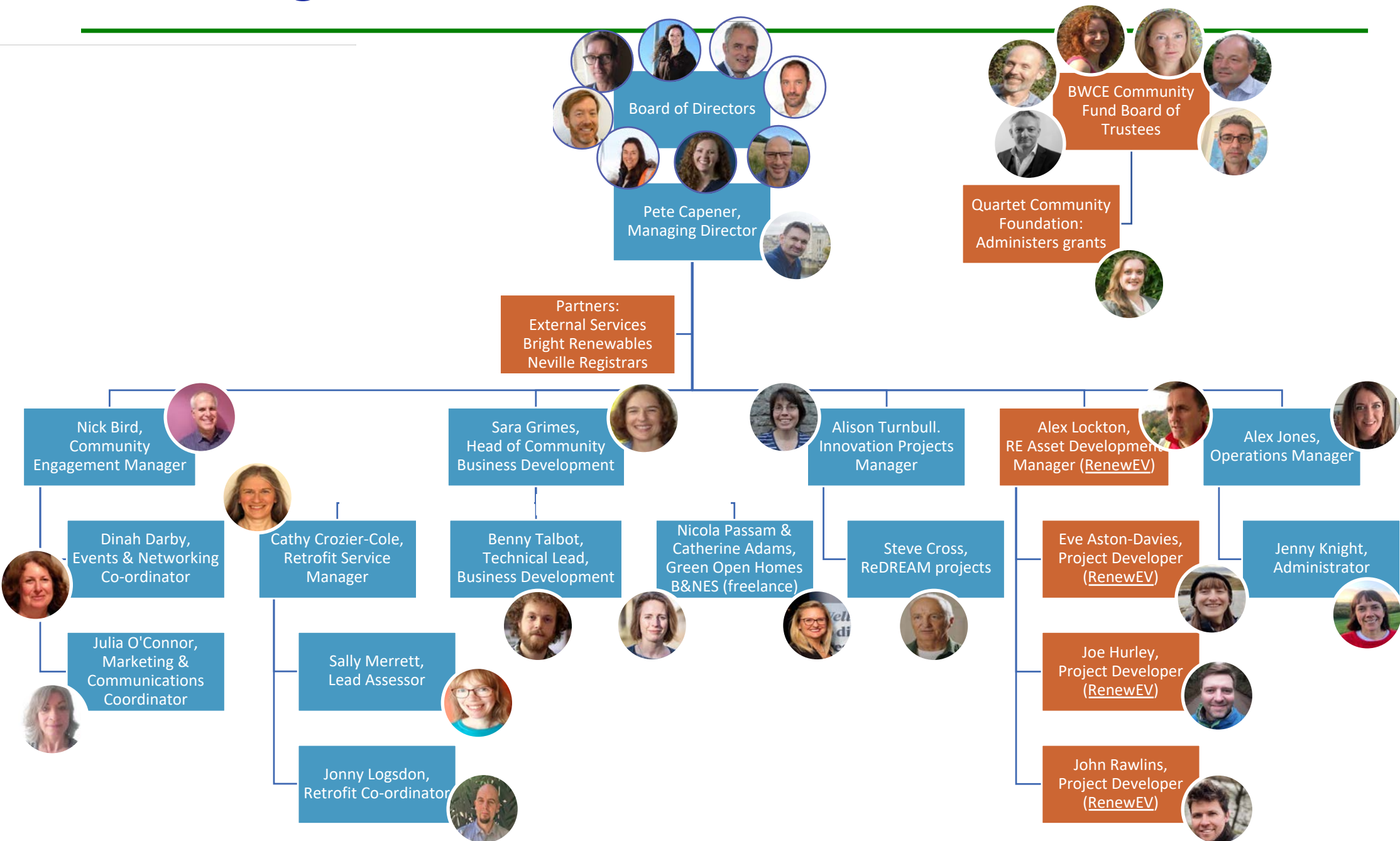
Other highlights from year

- Won 2 Bath Life Awards and a European Energy Award
- Raised £825k through share offer
- Secured £250k of capital grant to support renewables installation
- Secured £550k of revenue grant to support delivery of BWCE's Home Energy Service over 2 years
- Progressed EU funded research project, recruited over 50 participants & laid ground for focus on local energy supply
- Continue to exert local and national policy influence
- Increased turnover by 20% to £2.4 million and staffing by 40%



“Bath & West Community Energy shows enormous potential for green energy from the grassroots. The non-profit energy cooperative provides very promising and innovative solutions for the collective installation of photovoltaic systems on communal roofs, from which all participants benefit...we congratulate you on this outstanding achievement”

BWCE Organisational Structure



Future BWCE Development

Working to Develop Three Core Areas of Activity



Building Community Support

As we increase local renewable energy projects we will get push back
We need to build greater community support

Target Community Benefit

How do we allocate community funds and deliver services to maximise benefit to host communities?

Increase Community Accountability

How do we give communities a clearer voice within BWCE operations?

Supply Cheaper Electricity to Local Consumers

Only possible on a pilot basis at moment. Need regulatory change, might happen over coming years

Raise the profile of BWCE and the Community Energy Model

Summary

Positive last year

- Projects have hit targets, installing more renewables, strengthening development pipeline, increasing organisational resilience and capacity, innovation projects progressing and outreach & policy work is increasing profile.

This year – so far so good ...

- Projects on target to date, increasing installation rate of new renewables with increasing opportunities for making an impact with an expanded staff team

THANK YOU FOR YOUR CONTINUING SUPPORT!!

**CAN YOU HELP US REACH OUT TO NEW AUDIENCES AND LAUNCH OUR
NEW ENERGY EFFICIENCY SERVICE**

Q&A

ANY QUESTIONS?

Contact Details

Pete Capener – pete.capener@bwce.coop – 07775 781331

BWCE Website – www.bwce.coop

