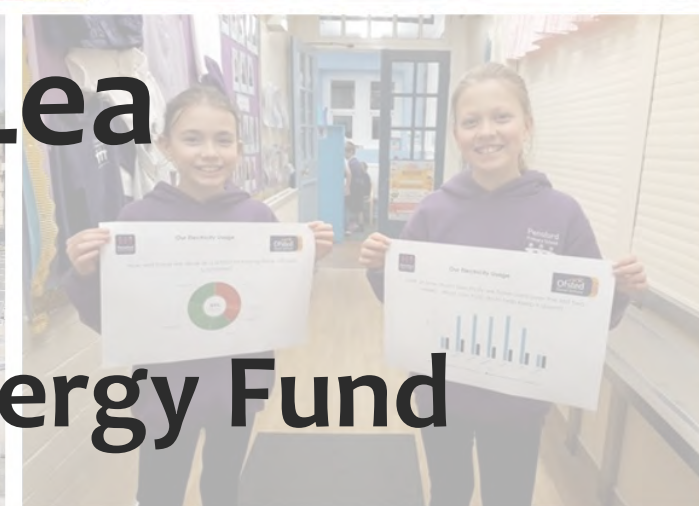




**Bath & West
Community Energy**
Generating local energy



Sophie Hooper Lea Chair of Trustees Bath & West Community Energy Fund



Bath & West Low Carbon Community Fund CIO



- Independent charity with 6 trustees
- Redistribute surplus BWCE income to local projects for community benefit
- Reducing carbon emissions and tackling fuel poverty
- Particularly welcome applicants close to BWCE project



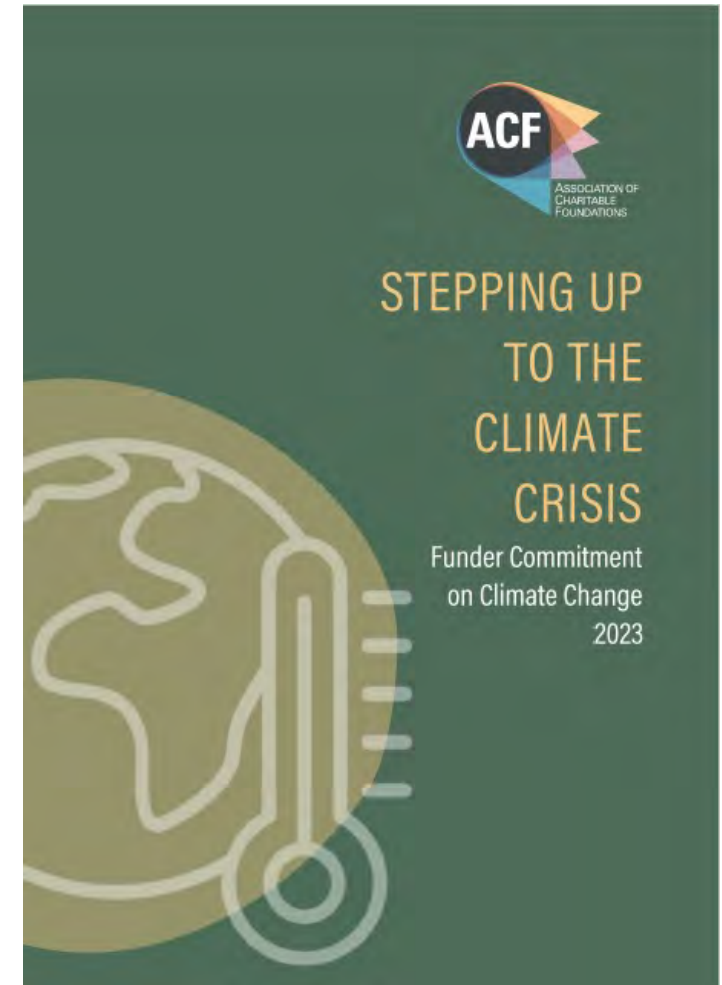
**Bath & West
Community
Energy Fund**

Funder Commitment on Climate Change



- 100+ UK signatories
- Surveyed annually on progress
- Report publicly each year
- Spoke on fuel poverty in 2023 – linking the cost of living and climate crisis

FUNDER
COMMITMENT
ON CLIMATE
CHANGE



Upcoming Funding Round



- Grants from £500 - £5,000
- Opening on 19th September (pending member approval)
- Closing on 4th November
- Administered by Quartet Community Foundation
- Updated guidelines
- Applications via the Quartet website
- Grants announced in January 2024



Community Benefit



Since 2014, BWCE has given the BWCE Fund

£302,000

and has given

a further **£28,000** to

South Dartmoor Community Energy

Total community benefit: **£330,000**

Grants Handed Out



To date, the BWCE Fund has handed out grants
worth over

£270,000

to

91 local projects
representing

57 different local community organisations



2022-23 Grants

£31,505 awarded to **11 projects**
plus **£5,000** to South Dartmoor Community Energy

- Bath City Farm
- Bath Share & Repair
- Climate Friendly Bradford on Avon
- Climate Hub B&NES
- Fairfield House
- Keynsham Community Energy
- Kidical Mass Bath
- Oasis Hub
- Southside Family Project
- SWALLOW
- Transition Bath – Eco Together



Slow cooker project

2022/23

Why slow cookers?



Household energy bills rising

July 2023 6.6 **million** UK households in fuel poverty* (based on the definition of low income households spending more than 10% of their income on their energy bills).

KCE wanted to help alleviate fuel poverty in Keynsham –

And reduce our carbon footprint at the same time

Slow cookers (5p h/hr) – more energy efficient than hobs (68p p/hr) and ovens (£1.02 p/hr)

*National Energy Action



The project

Keynsham Children's Centre:
activities and support services
to help with all aspects of
parenting to make sure every
child gets the 'best start in
life' and improve their life
chances.

Centre for Sustainable Energy:
Fuel poverty advisor

Keynsham Community Energy

**Together providing slow
cookers, energy saving items
and energy debt advice to low
income families in Keynsham**



Funding



BWCE Community Energy Fund

Via Quartet Foundation

£2,700

To provide slow cookers and energy advice



Keynsham Town Council

£1,100 to give away low cost energy saving items

Blankets, wheaty bags, draught proofing, lightbulbs





Successes

50 slow cookers medium and large

50 families – over 200 people – low income families struggling to pay energy bills

Hired a nutritionist to co-write a recipe book

Ran two sessions at Keynsham FOOD Club.

KCE gave out slow cookers, store cupboard ingredients, a recipe booklet and energy efficiency products (blankets, lightbulbs, draught excluders - bought using a separate grant from Keynsham Town Council).

CSE advisor gave out warm home packs and discussed energy bill issues.





Successes

Timed slots for clients allowed for individual conversations about energy efficiency and issues with e.g. energy bills.

B&NES Nutritionist cooked a recipe in a slow cooker and offered samples during the sessions.

Keynsham Children's Centre also distributed slow cookers to vulnerable individuals who they work with on a 1:1 basis in their homes.

Clients included eight Ukrainian refugees on the Homes for Ukraine scheme.





CLIMATE HUB

Bath & North East
Somerset

2023 Update





CLIMATE HUB

Bath & North East
Somerset

Key updates and events

- December 2022: Exciting News! Climate Hub BANES officially became a registered charity and secured a grant from BWCE.
- Since then, we've been very busy:
 - On the lookout for our perfect place to call home 🏠
 - Connecting with our local council 🗣️
 - Exploring opportunities to secure extra funding 💰
 - Teaming up with awesome organisations 🤝
 - Most importantly, continuing engagement and outreach in BANES ❤️
- Our adventures have taken us to:
 - Kingsmead Square with our green gazebo 🌳
 - The lively Keynsham eco festival 🌍
 - Collaborated with Share & Repair at the Rec during Bath Carnival 🎉
 - 3 days of fun-filled events at 15 New Bond Street 🤪
 - Adventures at the Assembly Rooms for the Forest of the Imagination ✨
 - Exciting book launch with Toppings and Tori Tsui 📖
 - Hanging out at the 3SG Volunteer Fair 🤝
- Plus, we've been busy boosting our social media presence with [@climatehubbanes](#) 📱





How have we used BWCE grant funding?

We've been making the most of our £1,200 grant:

- Securing pitches and event spaces 📍
- Gathering essential equipment and "consumable" items for our engaging outreach events – everything from handy portable tables to crafting clay 🍷
- Investing in a "sum-up" machine (a real game-changer!) 🖨️
- Helped us to engage with the council and other organisations 🤝

But there's still more excitement in store:

- Upcoming plans include obtaining display boards and additional equipment for both pop-up and permanent spaces, with a preference for preloved items ♻️
- We're gearing up for boosting our social media and web presence, including video editing and enhancing our website platform, all to help us connect with other funders and supporters 🌐



CLIMATE HUB

Bath & North East
Somerset

What is coming up next?

- We're looking forward to an inspiring 'Vision Day' for Trustees in Sydney Gardens 🌳
- We'll be joining the Extraordinary Earth Day at the Abbey 🌍
- Later in the Autumn, we're hoping to take up residence at the Assembly Rooms and Twerton Art Space 🍂
- We're hard at work creating a basic website 🌐
- We're continuously crafting engaging outreach materials and innovative 'stations' to connect with you 📦
- The search for our perfect premises continues, and we're gearing up for additional fundraising efforts to secure our rental space 🏢
- We're forging valuable connections with other organisations and are proudly part of the Ecooperation Network for B&NES 🤝





CLIMATE HUB

Bath & North East
Somerset

THANK YOU



**Bath & West
Community
Energy Fund**

**Thank you for your
continued support for the
BWCE Fund**

Sophie Hooper Lea

Chair of Trustees

BWCE Fund

bwcefund@bwce.coop

www.bwce.coop/community-benefit

www.linkedin.com/in/sophiehooperlea