



**Bath & West
Community Energy**
Generating local energy



Report on BWCE Activities

Pete Capener, MD
Bath & West Community Energy



Outline

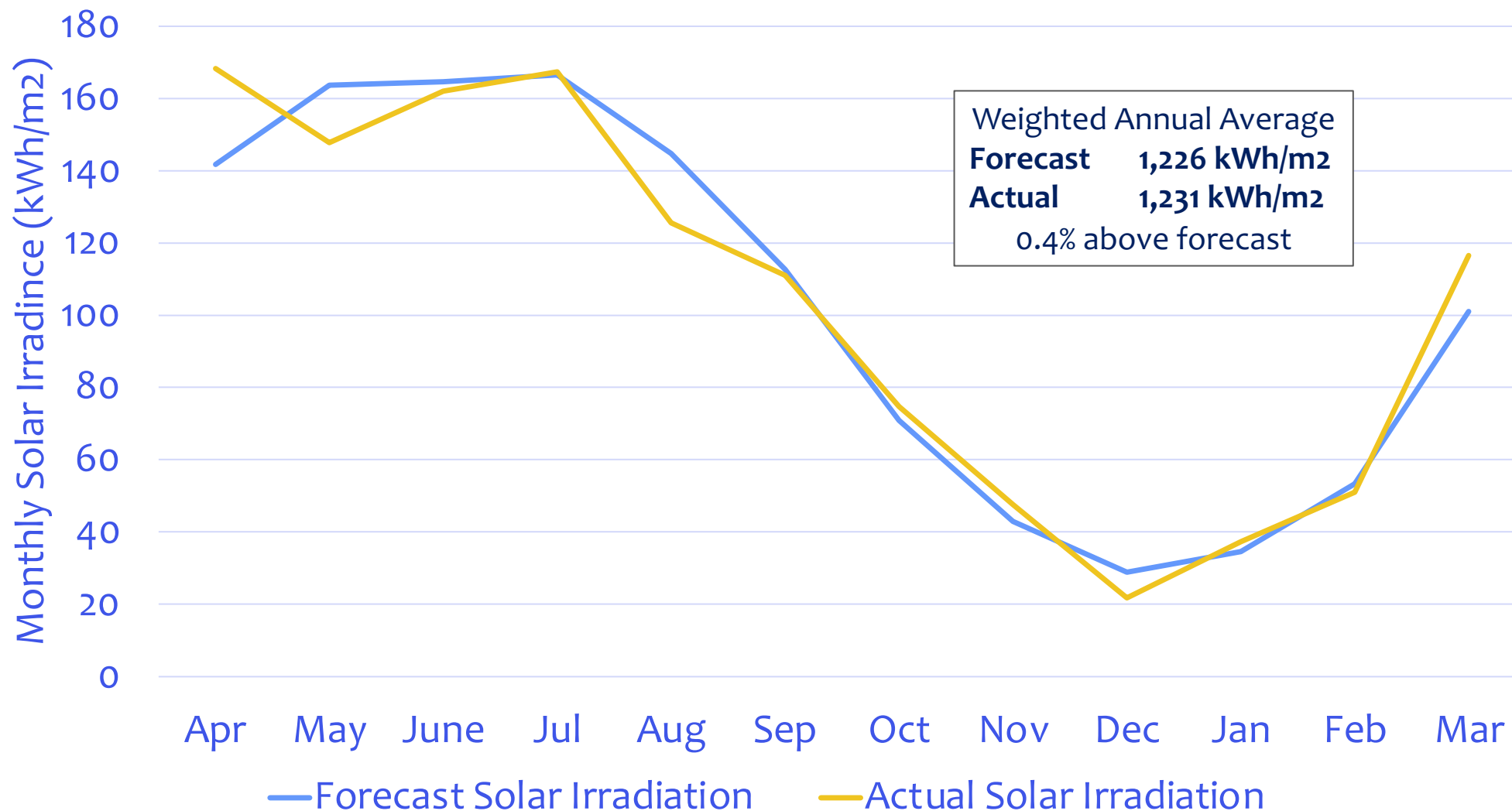


1. Project Performance
2. New Project Development
3. Business Plan Update
4. Energy Crisis
5. Policy and Influence

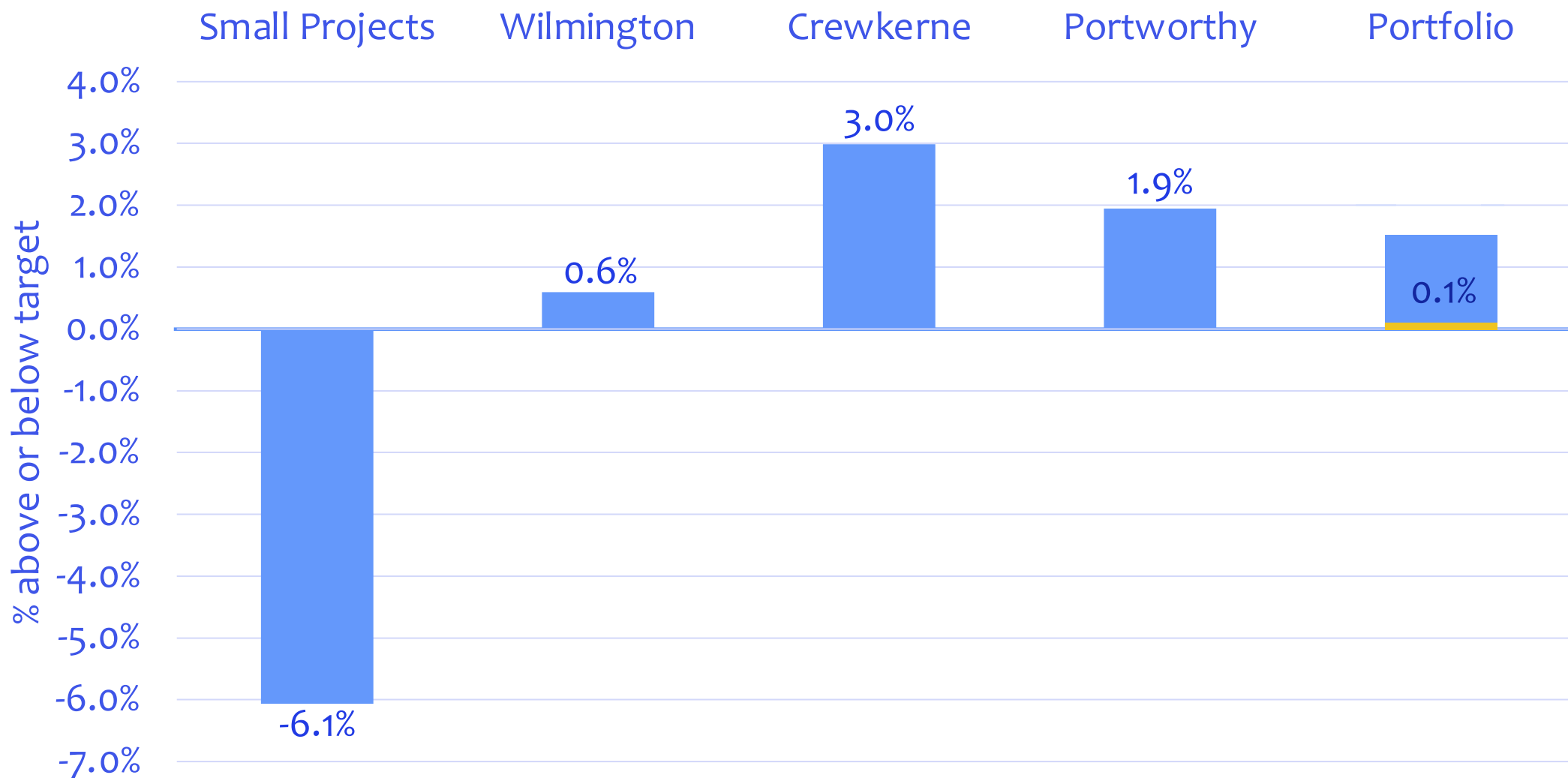
Solar Irradiance - 2021-22



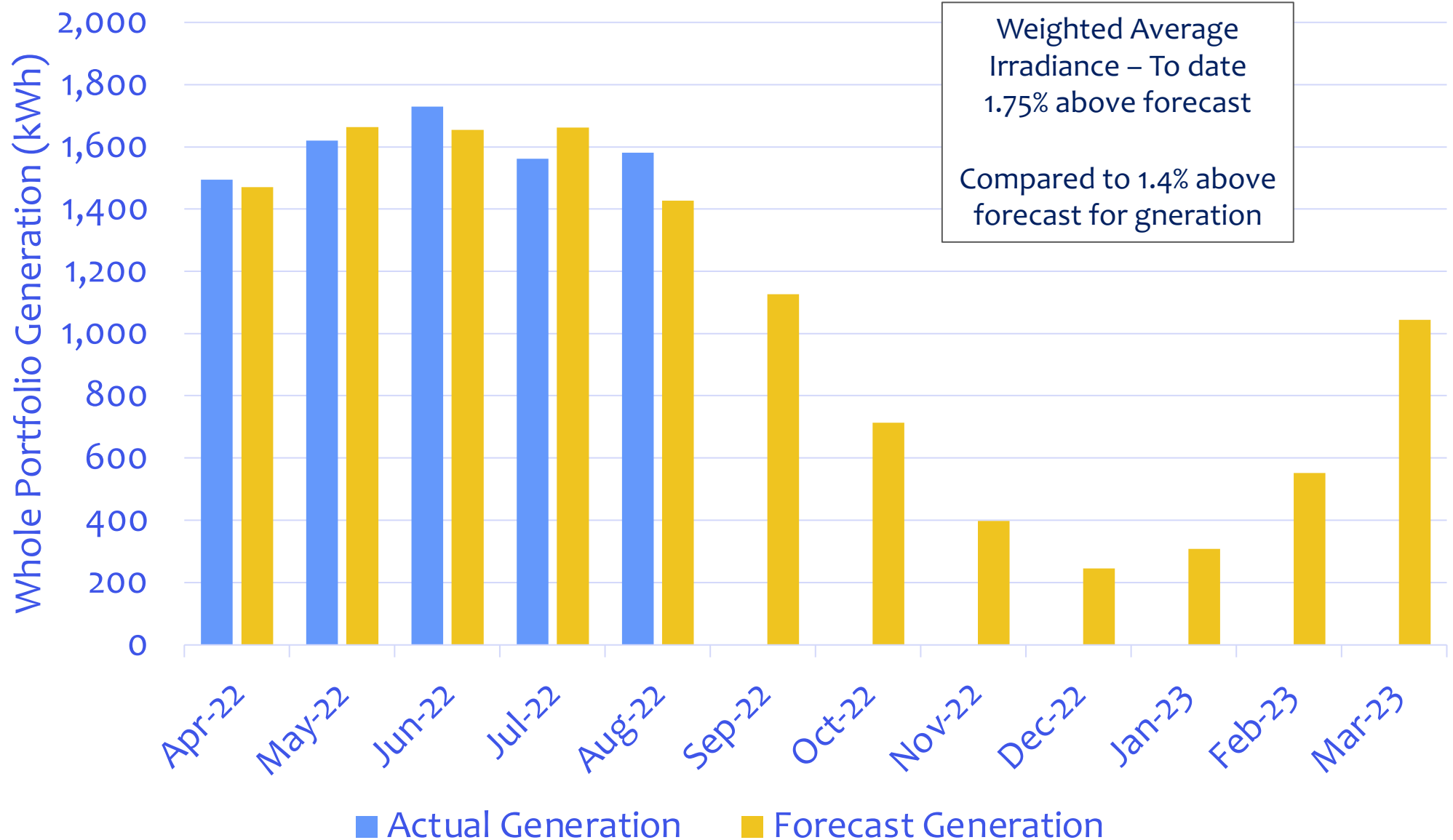
Weighted Average Solar Irradiance Across Three Largest Ground Mount Solar Sites (92% of Portfolio)



Generating Performance by Project – 2021/2022



Portfolio Performance 2022-23



Project Development



	KW	Capital Cost
Built out in early 2022 – rooftop solar		
Lansdown Golf Club	41	£33,825
Ralph Allen School 3	25	£19,250
Writhlington School	170	£114,750
Sub total	236	£167,825



Project Development



	KW	Capital Cost
Built out in early 2022 – rooftop solar		
Lansdown Golf Club	41	£33,825
Ralph Allen School 3	25	£19,250
Writhlington School	170	£114,750
Sub total	236	£167,825
Built out July-August 2022 – rooftop solar		
Hayesfield School	91	£87,155
Somervale School	114	£93,138
Beechen Cliff School	262	£191,260
Norton Hill School	160	£124,640
Sub total	627	£496,193



Project Development



	KW	Capital Cost
Built out in early 2022 – rooftop solar		
Lansdown Golf Club	41	£33,825
Ralph Allen School 3	25	£19,250
Writhlington School	170	£114,750
Sub total	236	£167,825
Built out July-August 2022 – rooftop solar		
Hayesfield School	91	£87,155
Somervale School	114	£93,138
Beechen Cliff School	262	£191,260
Norton Hill School	160	£124,640
Sub total	627	£496,193

	KW	Capital Cost
With site approval		
Three Ways School	129	£92,500
Corsham School 2	33	£26,004
St Augustine's College	70	£56,000
St Marys School	20	£18,000
St Marks School	52	£46,540
St Johns School	41	£39,483
Sub total	345	£278,527

Project Development



	KW	Capital Cost
Built out in early 2022 – rooftop solar		
Lansdown Golf Club	41	£33,825
Ralph Allen School 3	25	£19,250
Writhlington School	170	£114,750
Sub total	236	£167,825
Built out July-August 2022 – rooftop solar		
Hayesfield School	91	£87,155
Somervale School	114	£93,138
Beechen Cliff School	262	£191,260
Norton Hill School	160	£124,640
Sub total	627	£496,193

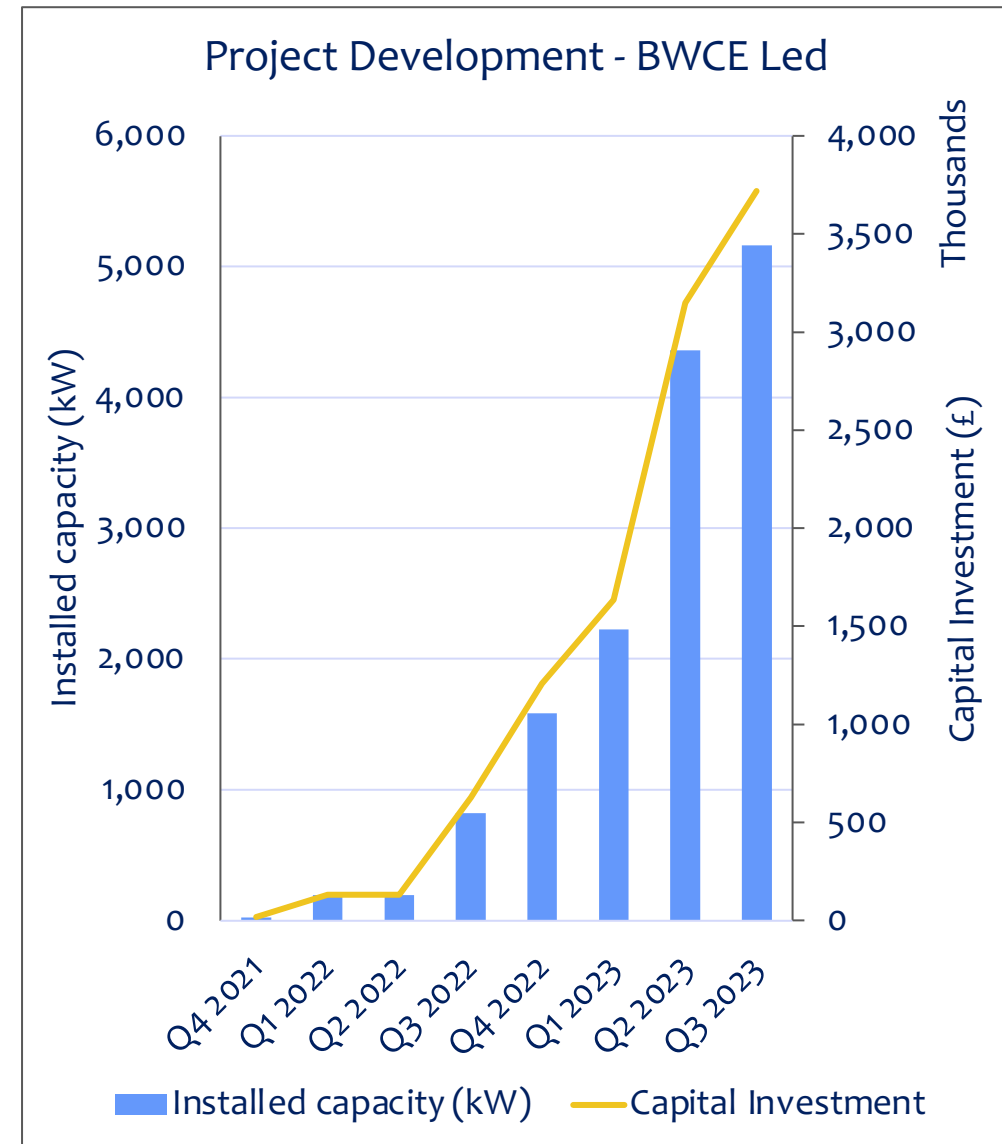
Developed ethical site selection guidelines

	KW	Capital Cost
With site approval		
Three Ways School	129	£92,500
Corsham School 2	33	£26,004
St Augustine's College	70	£56,000
St Marys School	20	£18,000
St Marks School	52	£46,540
St Johns School	41	£39,483
Sub total	345	£278,527
Under development with construction planned over next 12-18 months		
Schools & Colleges	655	£499,500
Higher Education	804	£571,502
Businesses	180	£131,860
Ground mount solar	2,130	£1,171,500
Sub total	3,769	£2,374,362
Total	4,977	£3,319,104

Summary - Progress to date



- Planning on over 1MW of new rooftop PV by Mar '23
- Potential for 2.1MW of ground mount solar, but grid capacity has delayed delivery
- Significant potential for partnerships with commercial developers
- Raised £1.2 million and just re-launched share offer



Summary - Progress to date



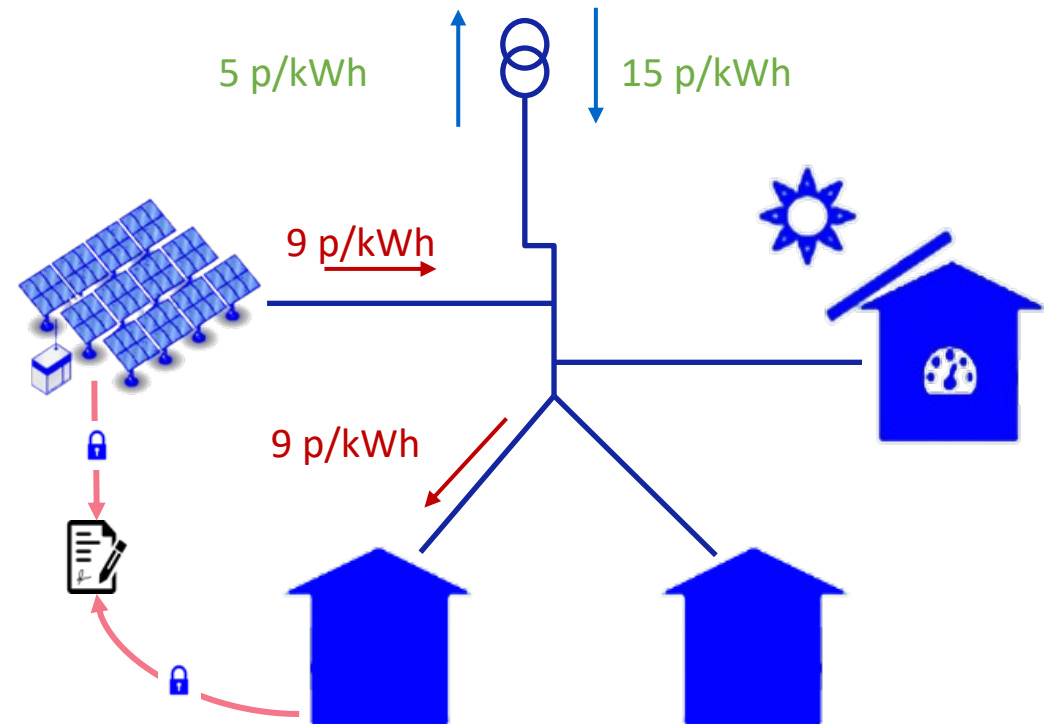
- Planning on over 1MW of new rooftop PV by Mar '23
- Potential for 2.1MW of ground mount solar, but grid capacity has delayed delivery
- Significant potential for partnerships with commercial developers
- Raised £1.2 million and just re-launched share offer
- Invested in biodiversity



Summary - Progress to date



- Planning on over 1MW of new rooftop PV by Mar '23
- Potential for 2.1MW of ground mount solar, but grid capacity has delayed delivery
- Significant potential for partnerships with commercial developers
- Raised £1.2 million and just re-launched share offer
- Invested in biodiversity
- Good progress on innovation – focus on local supply
- Active community outreach



Business Plan Update - Goals



1. Maximising Community Renewables
2. Increasing Recognition of BWCE and the Community Energy Model
3. Enabling Local Energy Supply
4. Clarifying the Community Role in Flexibility Markets

Updated to ..

4. Maximising the Community Energy Role within the Energy Transition

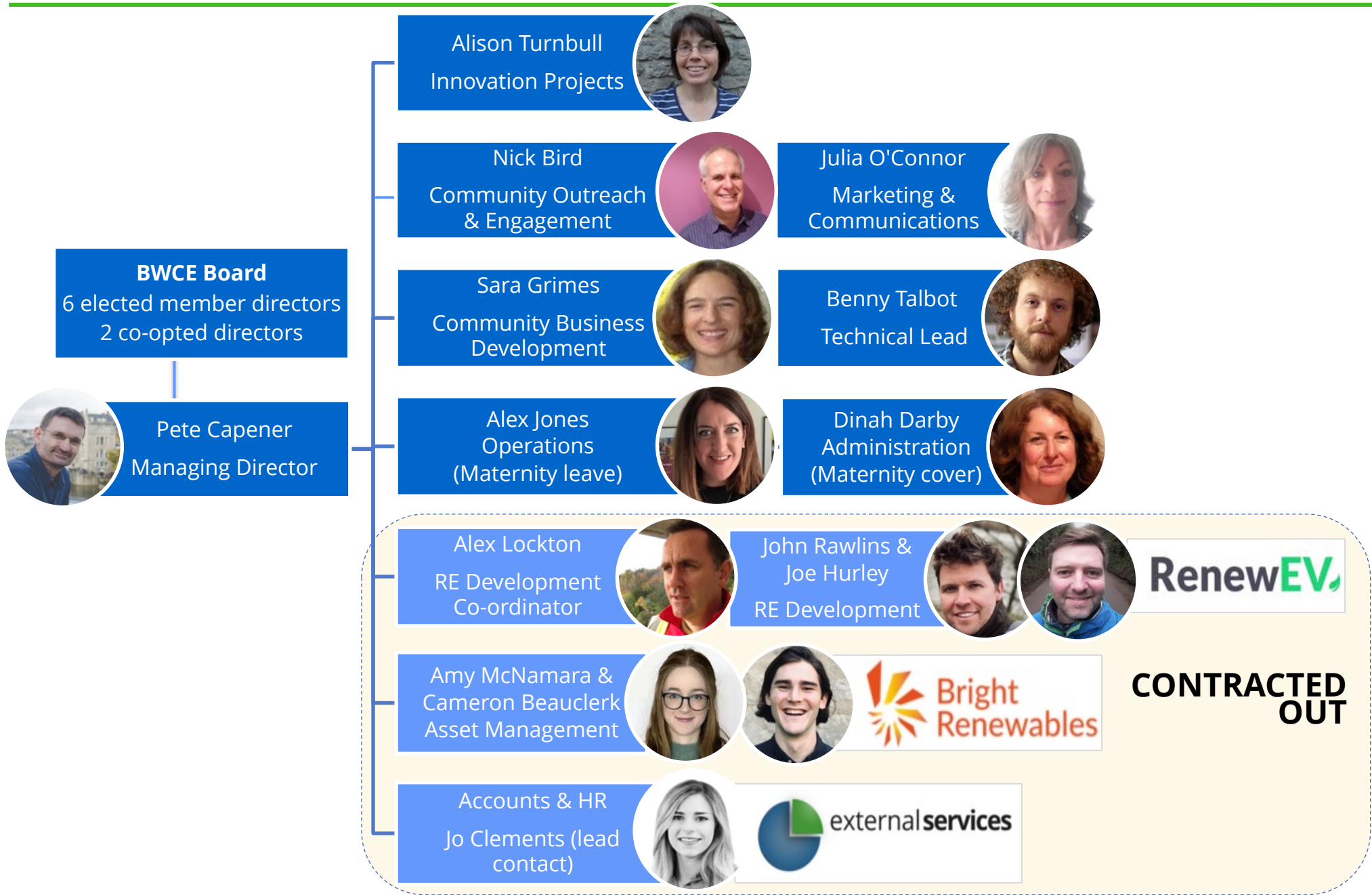
Why Expand Focus Beyond Renewables?



Because ...

- We need to **increase generation flexibility** – e.g. co-located battery storage – to **minimise risk** to future renewable project income
- We need to **increase demand flexibility** – e.g. reducing demand and shifting away from peak times – to **increase renewables** contribution
- We need to **supply direct to local consumers** at lower rates – to **increase support** for local renewable energy
- So we need to **invest in developing new community services** that will become financially viable in their own right In order to deliver this

Growing Team



Funding Delivery



- Core services - admin, asset management, operations, accounts, HR - **funded by renewable energy project income**
- Project development **funded by capital raised** for new projects and then capitalised within asset value on balance sheet
- New service development e.g. flexibility, local energy supply, **funded by grants**
- Contribution to overheads from income generated from project development and grant funding

BWCE Response to the Energy Crisis



High Inflation

High retail energy prices

- Driven by gas shortages, exacerbated by war in Ukraine

Generating

- Massive hardship and rapid increase in fuel poverty
- Increased BWCE income – around £100k extra this financial year, over £300k extra next year, if projects hit their targets

How do we emphasise the value of cheaper renewable energy?

- By selling local power direct to local consumers at lower prices

How do we invest unplanned surplus?

- Investing in existing projects
- Investing in new services
- Increasing community benefit
- Keeping some back for a rainy day



Areas of Policy Engagement

- New community business models
- Ofgem reforms of energy markets
- Local energy policy planning
- Local Authority Partnerships
- B&NES Local Plan Update

Engagement Mechanisms

- Industry working group on regulatory changes required for local energy supply
- Government advisory group on community energy (co-chair)
- West of England Climate Action Panel
- B&NES Council Climate and Nature Group
- Direct lobbying via Community Energy England (Deputy Chair)
- Consultation responses

Summary



Positive last year

- Projects have hit targets, started installing new renewables, development pipeline strong, organisation strengthening, innovation projects progressing and outreach & policy work is increasing profile.

Next year – so far so good ...

- Projects on target to date, increasing installation rate of new renewables with increasing opportunities for making an impact

THANK YOU FOR YOUR CONTINUING SUPPORT!!

HELP US TO PROMOTE OUR RE-LAUNCHED SHARE OFFER SO WE CAN
BUILD EVEN MORE RENEWABLES PROJECTS.

Q&A



ANY QUESTIONS?

Contact Details

Pete Capener – pete.capener@bwce.coop – 07775 781331

BWCE Website – www.bwce.coop