



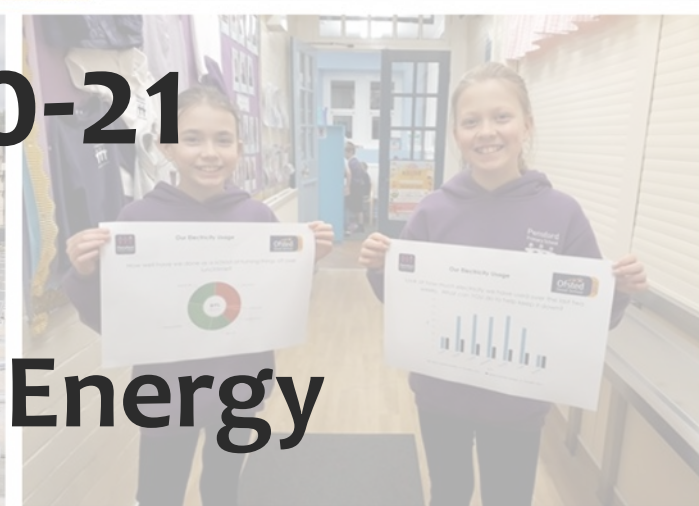
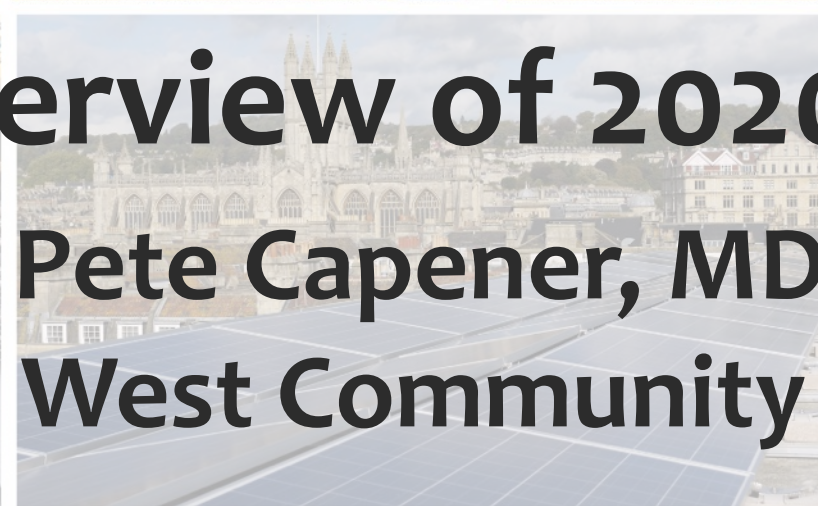
**Bath & West
Community Energy**
Generating local energy



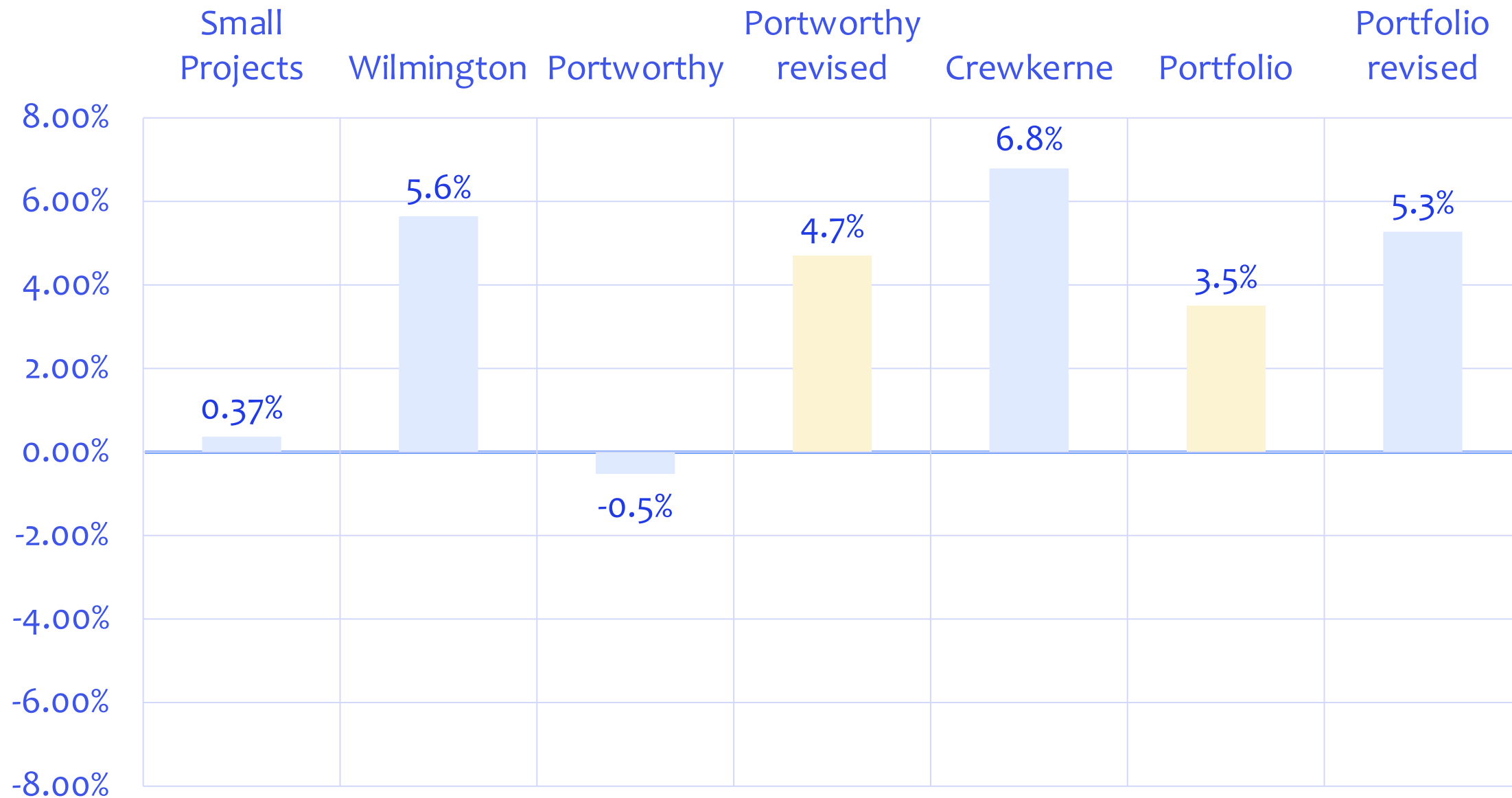
Overview of 2020-21

Pete Capener, MD

Bath & West Community Energy



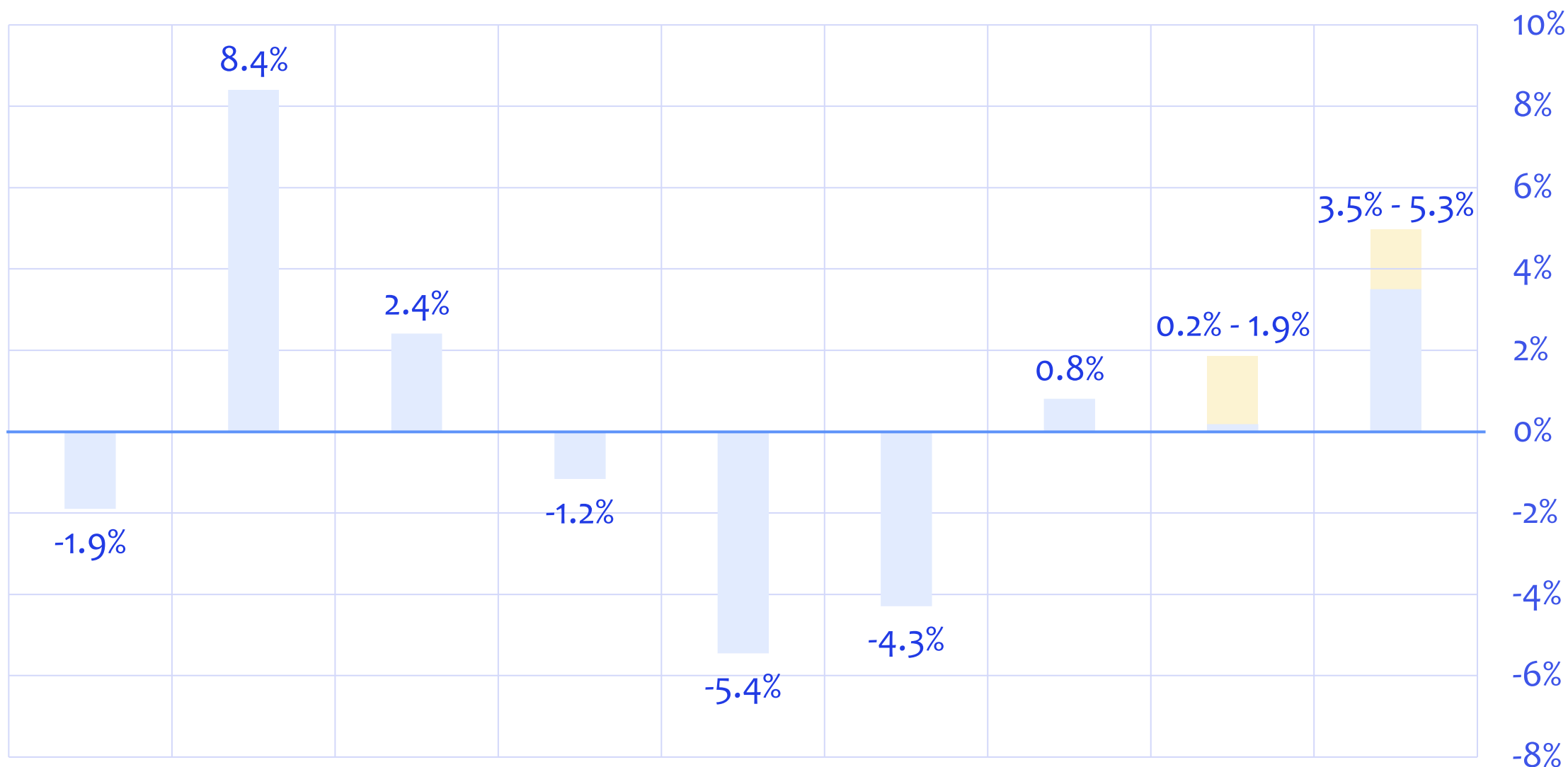
Generating Performance by Project – 2019/2020



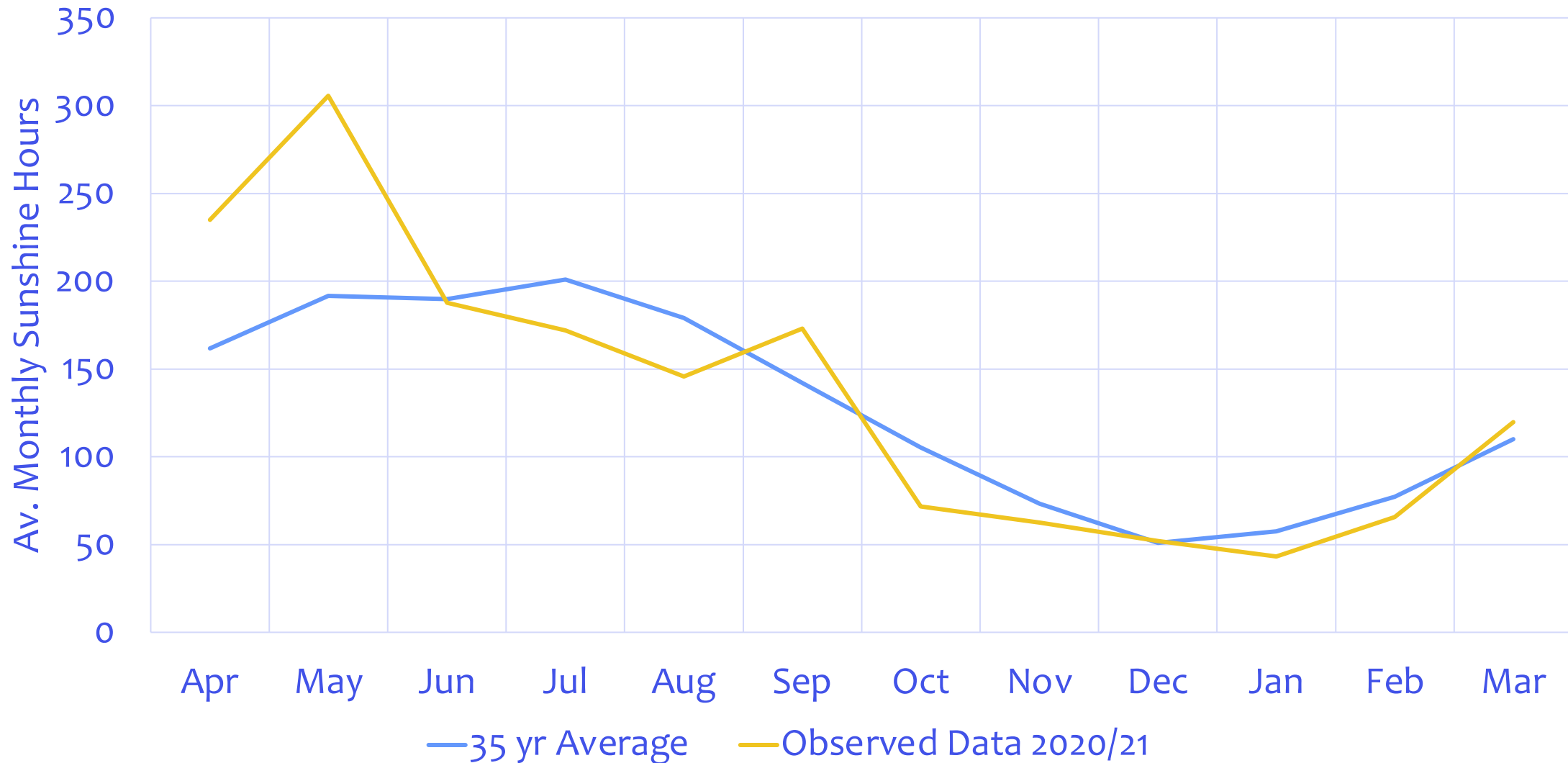


Project Performance by Year – Whole Portfolio

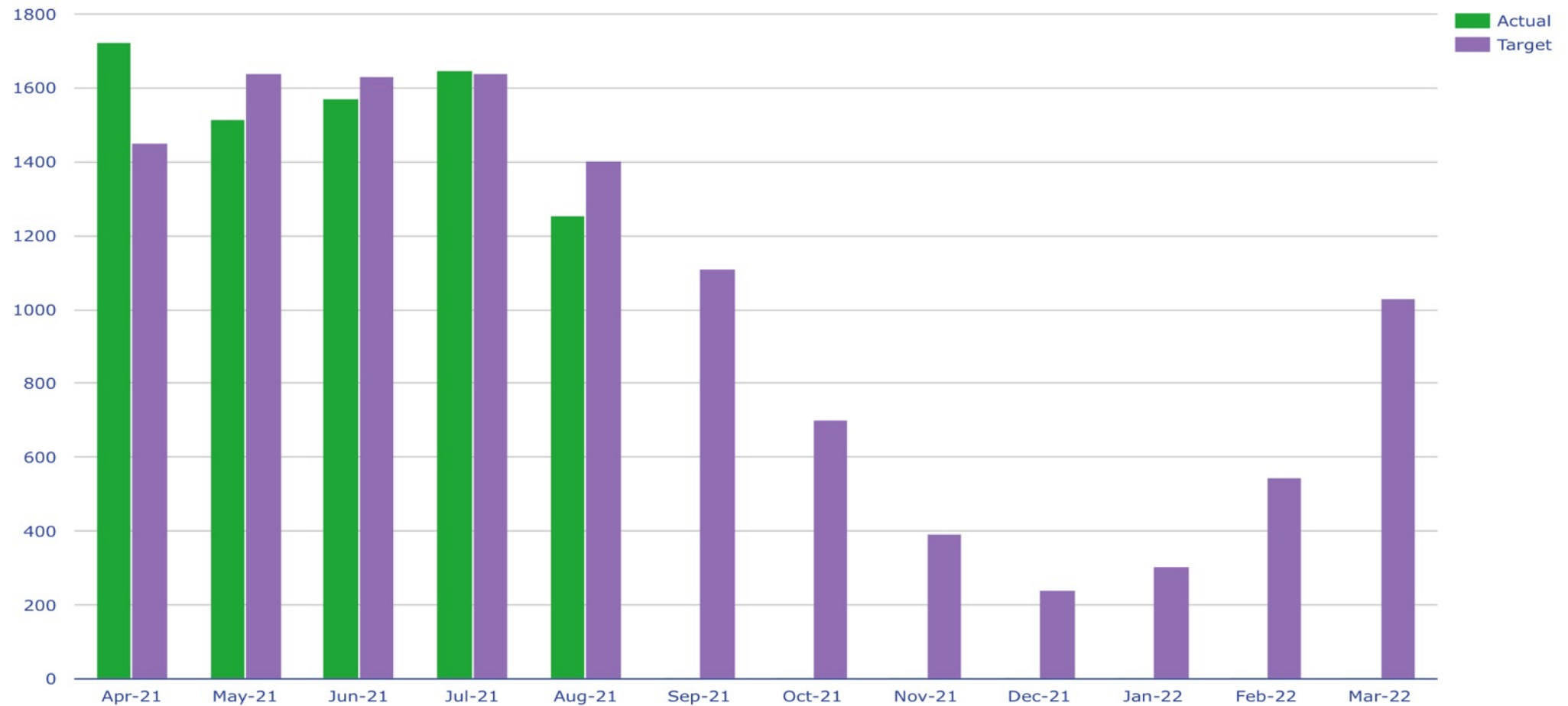
2012-13 2013-14 2014-15 2015-16 2016-17 2017-18 2018-19 2019-20 2020-21



35 Year Average to Observed Sunshine Hours – Yeovilton Met Office



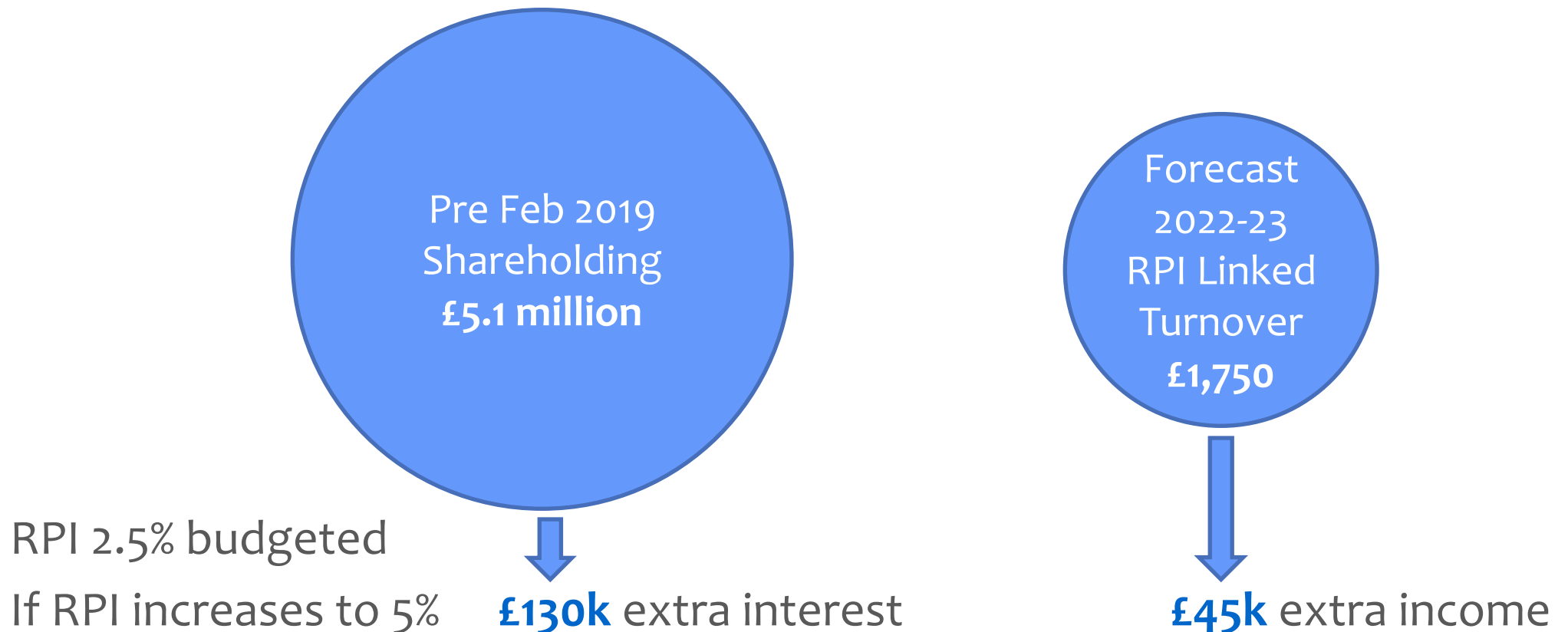
2021-2022 BWCE Project Performance To Date



Energy Markets



Impact of rising RPI and wholesale electricity prices on interest & turnover



Higher wholesale electricity prices increases our income for 2022-23 by **£115k**
Extra interest is covered by extra income for now

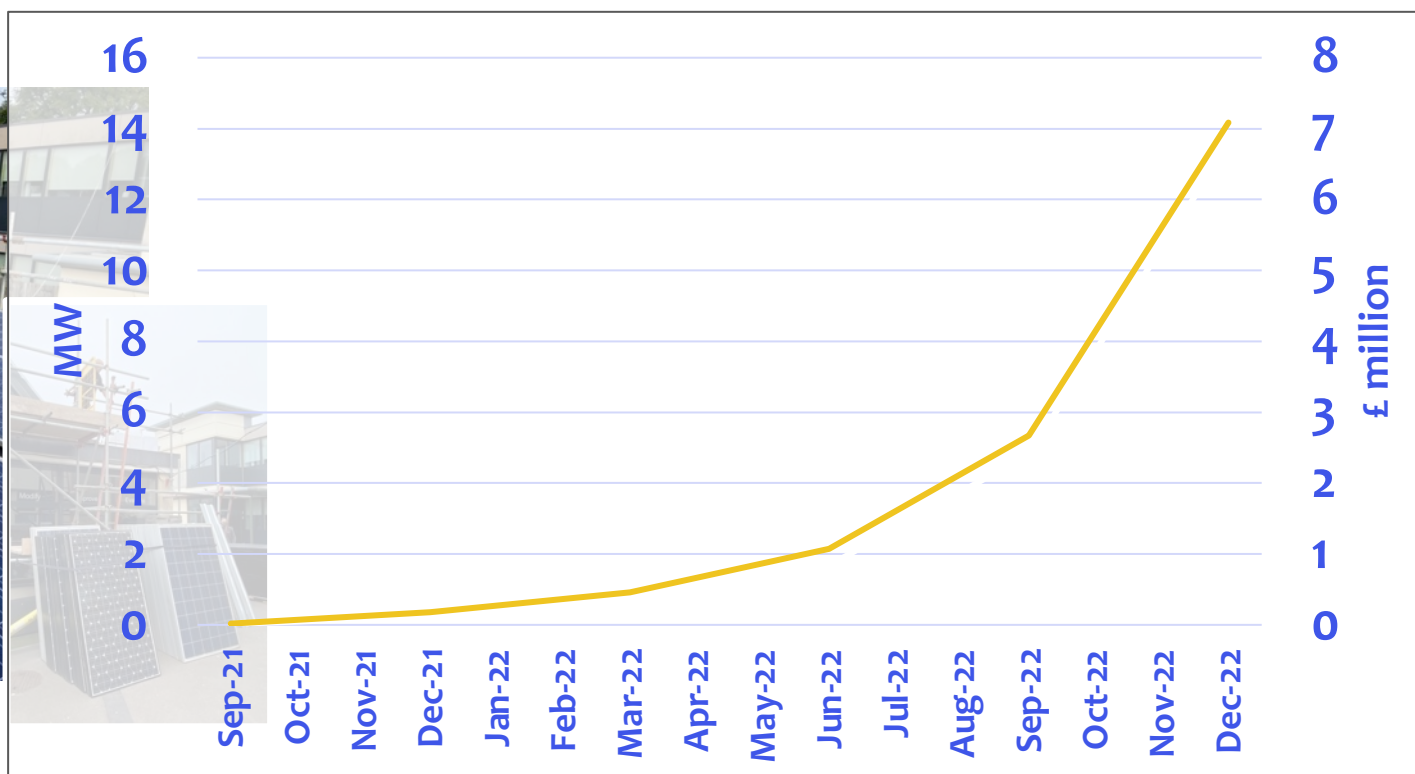


New Renewables Development

New Solar



Recent installation at Ralph Allen School



- Pipeline of 14MW with potential for more

Wind

- Sites of interest, waiting on B&NES Local Plan for supportive policy



Innovation Projects

Flex Community

- Carried out initial test including 11 households with immersion heaters
- Up to 42% reduction in cost for water heating from optimising use plus income from shifting demand
- Preparing for inclusion of heat pumps and EV chargepoints

Community EV Charge Point Network

- Feasibility almost complete with positive outcomes, subject to grid connection costs

Solar Streets

- 16 households with domestic solar and battery storage
- Up to 20% of demand shifted away from peak time during test period
- Learnt a lot about types of household where this type of service could work
- Can we develop a viable business model to deliver services, beyond grant funding?



Supporters Network – the story so far

Supporters Network set up in Autumn 2018

Quickly developed two working groups and a contact list of people who have received occasional requests for help.



Working groups **COCO** and **Technology** have:

- Supported events & webinars
- Produced publicity materials & reports
- Carried out research
- Set questions for council election candidates
- Supported outreach stalls.



Supporters Network – moving forward

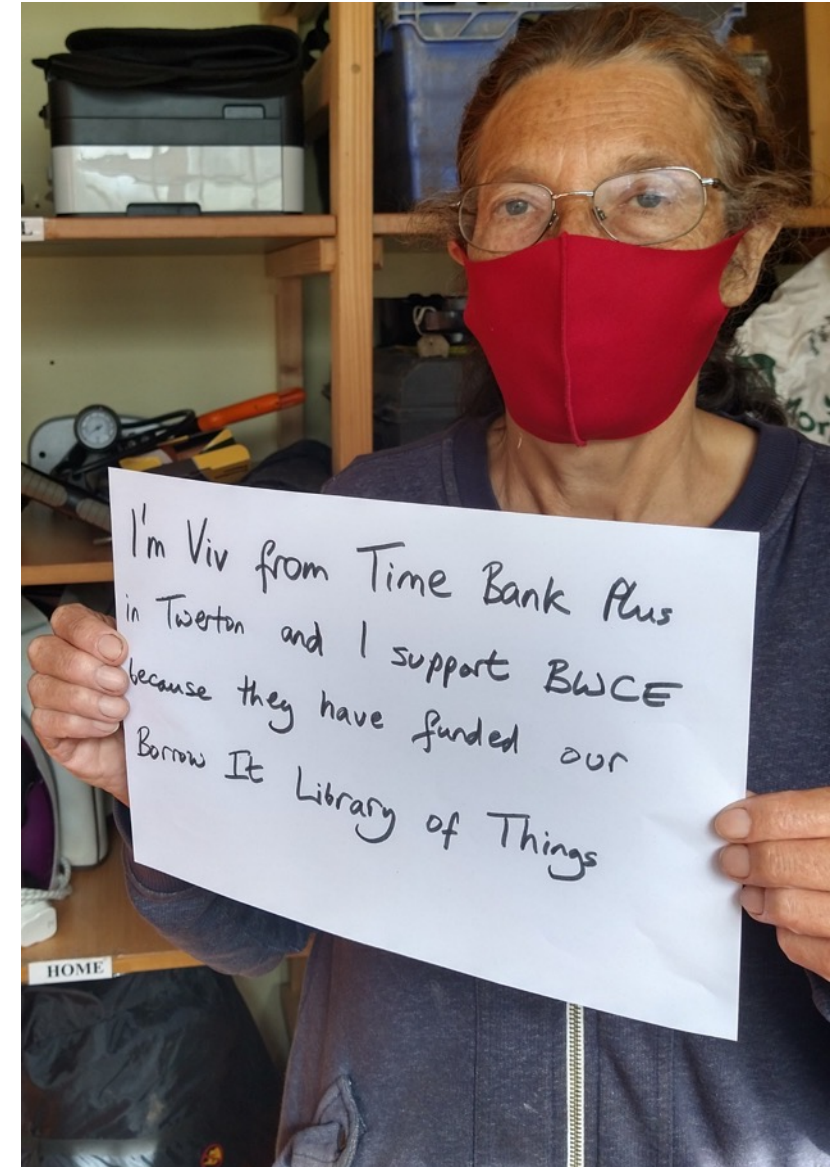
Launching a campaign to **sign up 1000 supporters by October 2022.**

- To demonstrate support for our community energy model
- To help us win backing for more projects
- To support our community engagement work

Register with name, email and post code. **We hope all our members will sign up too!**

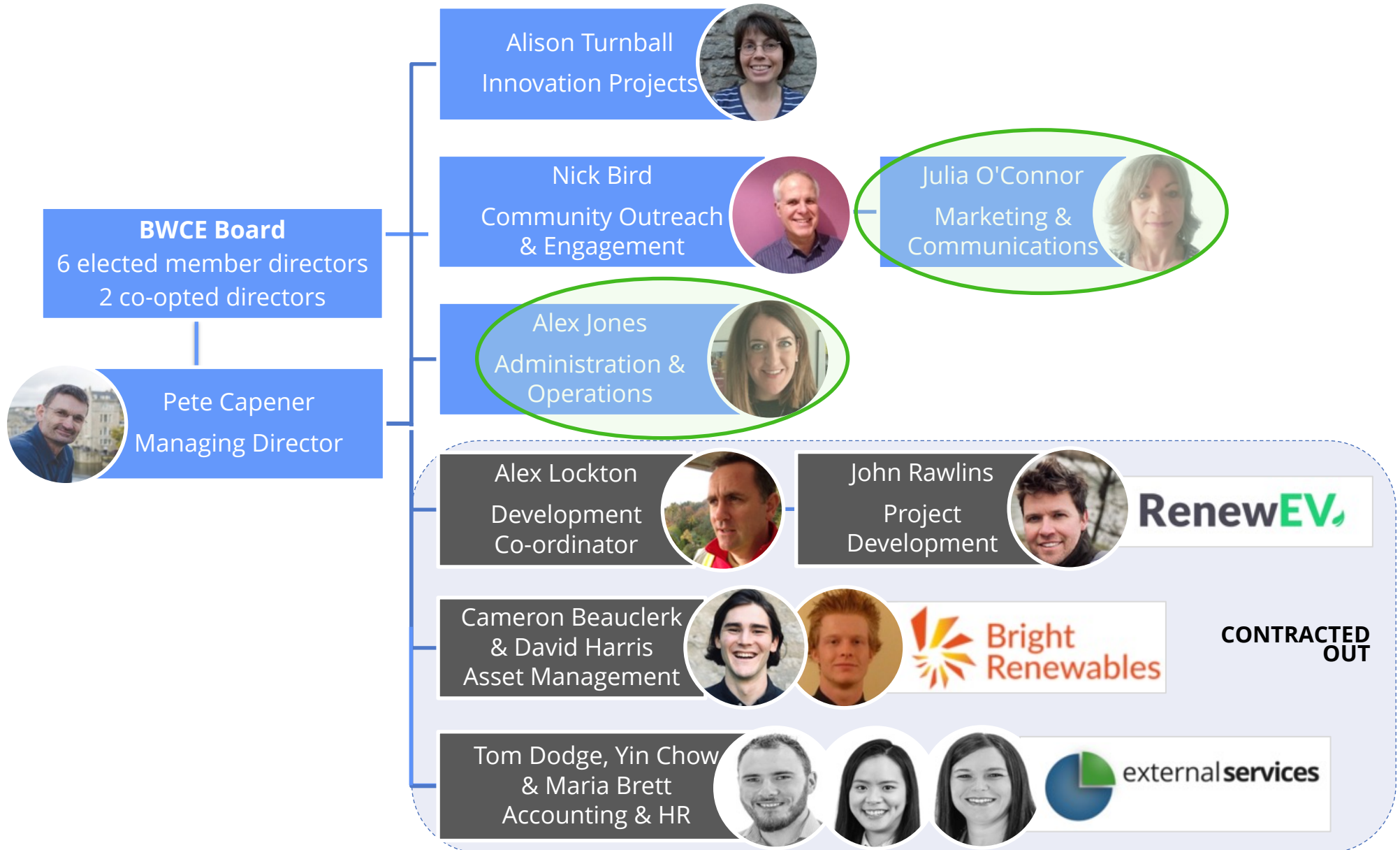
Regular email briefings with suggested actions

Please spread the word!



www.bwce.coop/supporters-network

Growing Team



Summary



Positive year

- Projects have hit targets, development pipeline grown, staff team grown, innovation projects making progress despite Covid and outreach work is increasing our profile

Next year – so far so good ...

- Projects on target to date, secured innovation project extensions due to Covid, started installing new renewables projects – finally! – with more to come, completing business planning process out to 2025 with lots of opportunities for making an impact

THANK YOU FOR YOUR CONTINUING SUPPORT!!

SIGN UP TO OUR SUPPORTER NETWORK TOO

HELP US BUILD EVEN GREATER MOMENTUM BEHIND POSITIVE CHANGE

Q&A



ANY QUESTIONS?

Contact Details

Pete Capener – pete.capener@bwce.coop – 07775 781331

BWCE Website – www.bwce.coop